



Lot 209, Waterlea Estate, WALLOON

4 | 2 | 2

\$395,400

## Advantage Plus 196 | Contemporary

Home Size: 196 m<sup>2</sup>  
Land Size: 480 m<sup>2</sup>

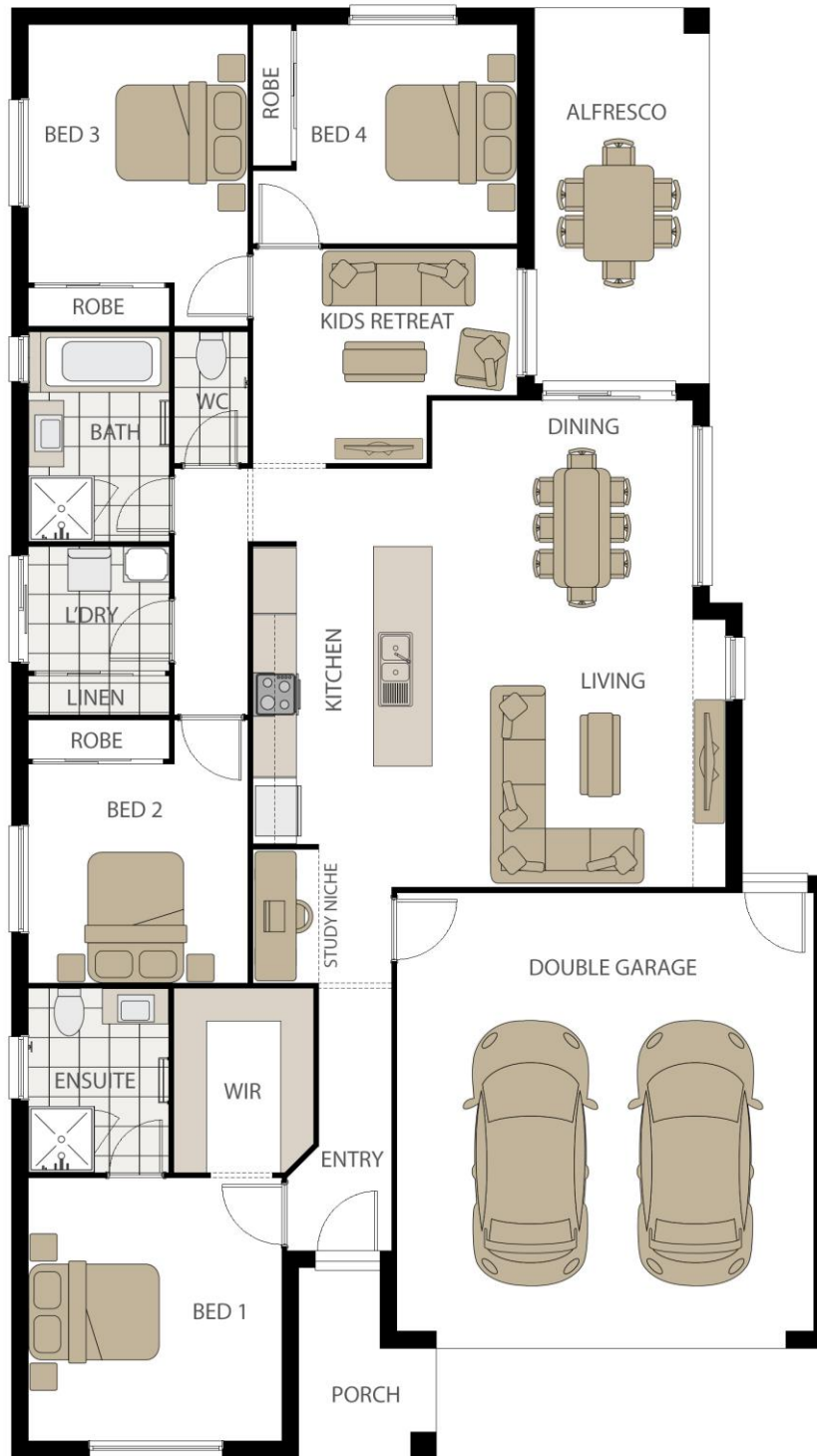
- Site costs to "E1"
- Rendered to suit Covenant Requirements
- Exposed aggregate driveway & path
- Concrete to Alfresco & Porch areas (Tiled Porch)
- Stone Benchtops & Overheads to Kitchen
- Split System A/C (2)
- 900mm Stainless steel kitchen appliances including oven, rangehood & ceramic cooktop
- LED downlights throughout with Ceiling Fans to Bedrooms
- Floor Coverings (Tiles & Carpet)
- Clothesline. rendered letterbox
- TV antenna & NBN ready
- \$7500 Fencing & Landscaping Allowance

All prices are GST inclusive and are subject to final contours and tender.  
Please refer to [oracleplatinumhomes.com.au](http://oracleplatinumhomes.com.au) for full terms & conditions.

### CONTACT

Adam Collins 0422 411 669 or  
[adamc@oracleplatinumhomes.com.au](mailto:adamc@oracleplatinumhomes.com.au)

07 3423 6300 | [oracleplatinumhomes.com.au](http://oracleplatinumhomes.com.au)  
QBSA 1174800 / NSW OFT 251160 / HIA Member No. 539981



## LAND DETAILS

Lot: Lot 209  
Size: 480m<sup>2</sup>  
Address: Waterlea Estate, Walloon

## HOME DETAILS

Facade: Contemporary  
Façade  
Area M<sup>2</sup>: 196m<sup>2</sup>

Adam Collins 0422 411 669 or  
adamc@oracleplatinumhomes.com.au

07 3423 6300 | oracleplatinumhomes.com.au  
QBSA 1174800 / NSW OFT 251160 / HIA Member No. 539981