

ORACLE PLATINUM HOMES



LINCOLN 39

HAMPTONS FACADE

4  2  4  2 

NEW BEITH ACREAGE DISPLAY CENTRE

102 Crystal Brook Road, New Beith, The Lanes Estate

Award winning for less

1300 006 722 | oracleplatinumhomes.com.au

ALTERNATE FACADES



VILLAGE FACADE



CENTRAL FACADE



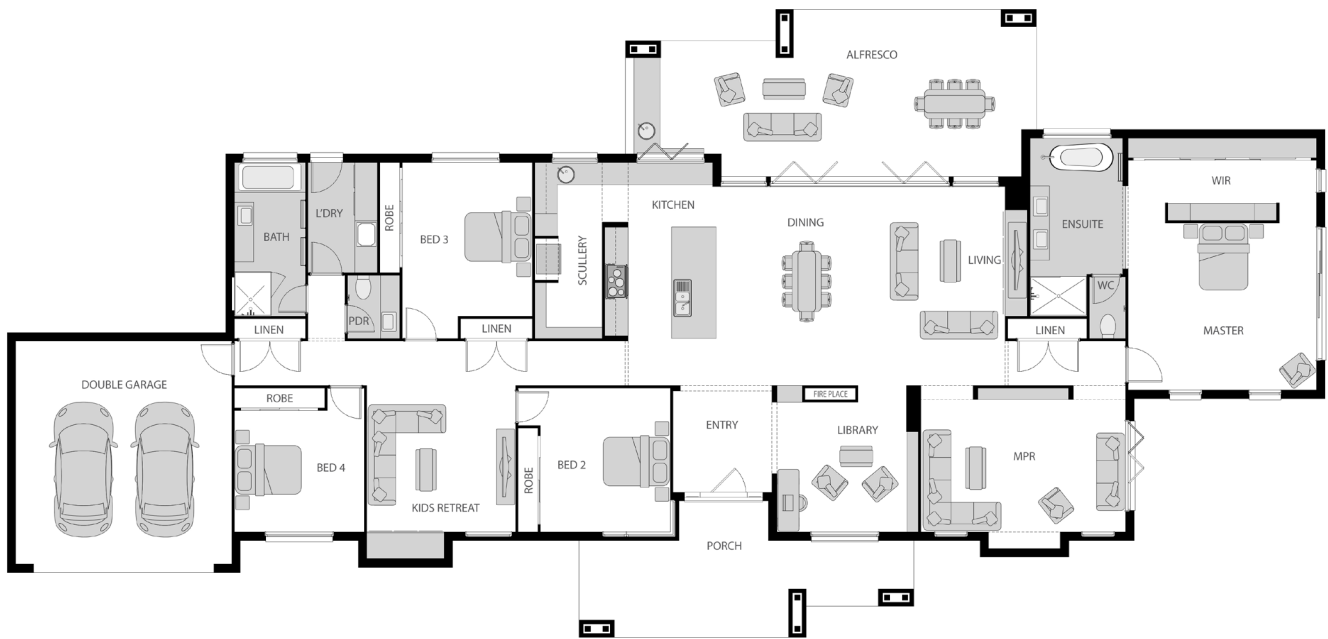
URBAN FACADE

LINCOLN 39

Enjoy a modern twist on classic acreage living, seamlessly blending the undeniable charm of grand open spaces with quiet and comfortable modern practicality. The Hampton style facade and feature entry door quickly prove this home is an oasis of tranquillity with generous living spaces, spacious master suite and countless private living possibilities.

HOME DEPTH	16.91 m
HOME WIDTH	35.48 m
TOTAL HOME AREA	395.41 m²

SUITS ACREAGE LOTS



KEY FEATURES

Private media & separate kids retreat | Resort style master, W.I.R & ensuite | Spectacular kitchen & scullery | Feature library & dual living areas | Spacious & practical open plan kitchen, dining & living areas | Seamless flow to sophisticated and spacious entertaining Alfresco with built in kitchen

Thanks for visiting!

Quality you can count on

1300 006 722 | oracleplatinumhomes.com.au

Copyright Oracle Building Corporation Pty Ltd trading as "Oracle Platinum Homes". All plans and Facades are copyright and no part may be used, copied or reproduced in any form without permission from Oracle Platinum Homes. All measurements are to be used as a guide only and may differ from what is shown dependant on Façade. Photos may depict fixtures, finishes and features such as structural landscaping, timber decking, façade features, interior furnishings, customer cabinetry & window upgrades that do not form part of the Oracle Platinum Homes standard inclusions. Some photos included reflect display homes and not standard finishes, for a full list of inclusions visit www.oracleplatinumhomes.com.au or speak to a Sales Consultant. Oracle Platinum Homes reserves the right to alter pricing or inclusions at any time. QLD: QBCC 1174800 NSW : OFT 251160C