



## \$425,000\*

Land \$195,000 | Home \$230,000

Lot 15 Woodfull Street "Bruckner Hill" Estate, Boonah

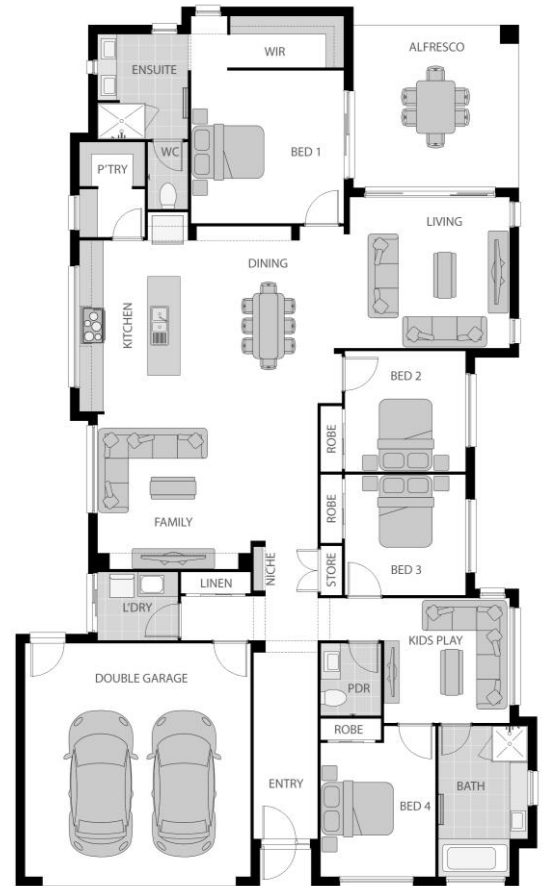
4 | 2 | 2

Land 808m<sup>2</sup> | Home 240.27m<sup>2</sup>

## IRIS 26 | CONTEMPORARY FACADE

### JADE INCLUSIONS:

- ✓ Façade as shown
- ✓ Colorbond Roof
- ✓ Steel frame & trusses
- ✓ Feature front entry door
- ✓ Concrete slab to Porch & Alfresco
- ✓ 2 x split system Aircon units
- ✓ Stone benchtops to kitchen
- ✓ Carpet & Tiles throughout
- ✓ Insect screens throughout
- ✓ LED down lights throughout
- ✓ Exposed aggregate driveway
- ✓ Clothesline & Letterbox
- ✓ TV Antennae
- ✓ All service connections incl. NBN
- ✓ H1 soil classification
- ✓ 12 month maintenance period\*
- ✓ Lifetime structural warranty\*



Contact: Russell Thompson | Sales Consultant

[russellt@oracleplatinumhomes.com.au](mailto:russellt@oracleplatinumhomes.com.au)

M: 0419 744682

Display: 102 Crystal Brook Rd, New Beith, Qld, 4124

\*Terms & Conditions apply: All prices are GST inclusive and are subject to final contours and tender. Please ask your Sales Consultant or refer to our website for further details [oracleplatinumhomes.com.au](http://oracleplatinumhomes.com.au). ~Fixed price applies to Essentials Home and Land Packages only.

Copyright Oracle Building Corporation Pty Ltd trading as "Oracle Platinum Homes". All plans and Facades are copyright and no part may be used, copied or reproduced in any form without permission from Oracle Platinum Homes. All measurements are to be used as a guide only and may differ from what is shown dependant on Façade. Plan is subject to approval by the Principal Developer and Local Authorities. Floorplan is indicative only and subject to change at any time without notice. Photos may depict fixtures, finishes and features such as structural landscaping, timber decking, façade features, interior furnishings, customer cabinetry & window upgrades that do not form part of the Oracle Platinum Homes standard inclusions. Some photos included reflect display homes and not standard finishes, for a full list of inclusions visit [www.oracleplatinumhomes.com.au](http://www.oracleplatinumhomes.com.au) or speak to a Sales Consultant. Oracle Platinum Homes reserves the right to alter pricing or inclusions at any time. Split Contracts Land & Construction -HIA MEMBER NO.539981. BUILDERS LICENCE NO. NSW 251160C. QLD QBCC 1174800.