



\$387,000*

Land \$199,000 | Home \$188,000

Lot 567 Tivoli Ave "COVELLA" Greenbank

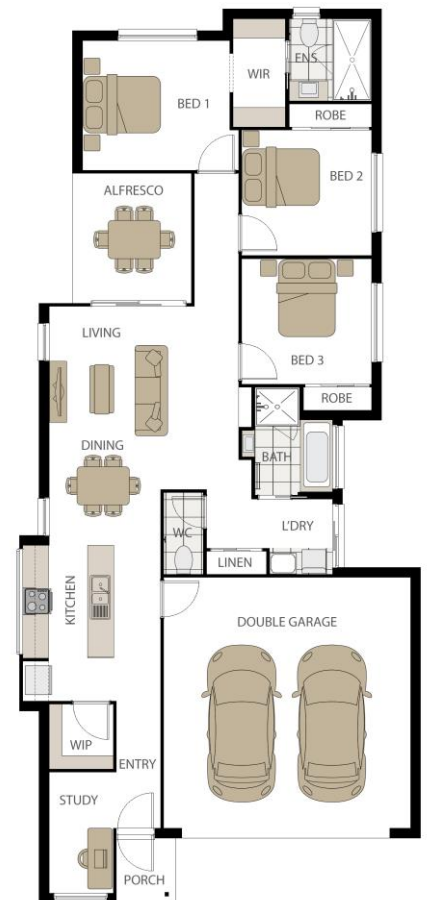
3 | 2 | 2

Land 294m² | Home 152.6 m²

APLIN 16 | CONTEMPORARY FACADE

JADE INCLUSIONS:

- ✓ Façade as shown
- ✓ Colorbond roof
- ✓ Steel frame & trusses
- ✓ Feature front entry door
- ✓ Structural slab to Porch & Alfresco
- ✓ 2 x split system air-conditioning
- ✓ Stone benchtops to kitchen
- ✓ Carpet & Tiles throughout
- ✓ Insect screens throughout
- ✓ LED down lights throughout
- ✓ Exposed Agg driveway – 40m
- ✓ Turf & landscaped garden
- ✓ Clothesline & Letterbox
- ✓ TV Antennae
- ✓ "M" Soil classification
- ✓ BAL 12.5 allowance
- ✓ 12 months maintenance period*
- ✓ Lifetime structural warranty*



Contact: Russell Thompson | Sales Consultant

russellt@oracleplatinumhomes.com.au

M: 0419 744682

*Terms & Conditions apply: All prices are GST inclusive and are subject to final contours and tender. Please ask your Sales Consultant or refer to our website for further details oracleplatinumhomes.com.au. ~Fixed price applies to Essentials Home and Land Packages only.

Copyright Oracle Building Corporation Pty Ltd trading as "Oracle Platinum Homes". All plans and Facades are copyright and no part may be used, copied or reproduced in any form without permission from Oracle Platinum Homes. All measurements are to be used as a guide only and may differ from what is shown dependant on Façade. Plan is subject to approval by the Principal Developer and Local Authorities. Floorplan is indicative only and subject to change at any time without notice. Photos may depict fixtures, finishes and features such as structural landscaping, timber decking, façade features, interior furnishings, customer cabinetry & window upgrades that do not form part of the Oracle Platinum Homes standard inclusions. Some photos included reflect display homes and not standard finishes, for a full list of inclusions visit www.oracleplatinumhomes.com.au or speak to a Sales Consultant. Oracle Platinum Homes reserves the right to alter pricing or inclusions at any time. Split Contracts Land & Construction -HIA MEMBER NO.539981. BUILDERS LICENCE NO. NSW 251160C. QLD QBCC 1174800.