

Thanks for visiting!

ORACLE
PLATINUM HOMES



ON DISPLAY:
IRIS 26 | CONTEMPORARY

1 Livingstone Street, Logan Reserve, Killara Estate

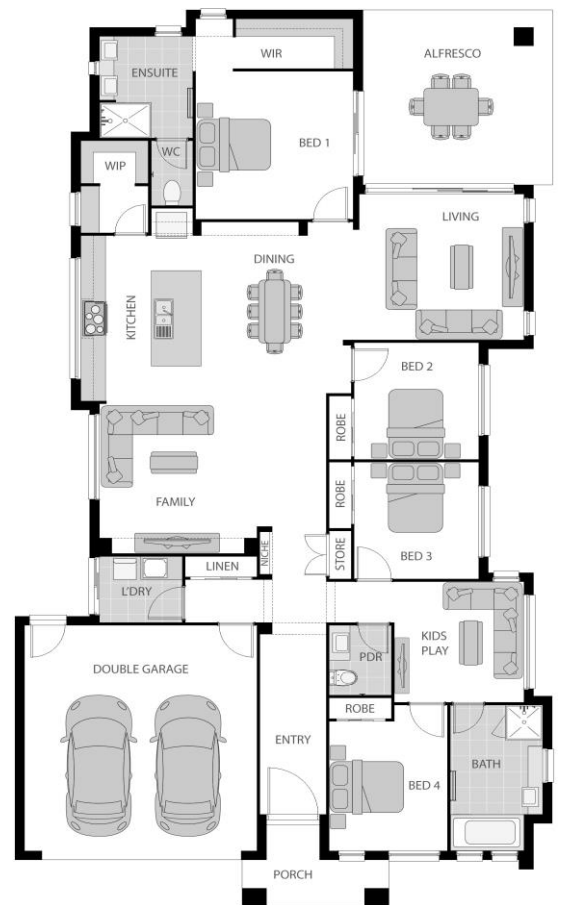
4 | 2.5 | 2

Home Size: 240m²

Intricately designed to maximise space whilst integrating that modern practicality of comfort and serenity, the iris 26, is the perfect home for any new families looking to upsize their lifestyle. With multiple entertainment and living spaces, you'll be able to entertain in style and retreat to luxury. The master entails a large ensuite and is complemented by an oversized walk-in robe, suiting for every couples needs.

Key Features:

Kid's retreat and family room | Large master retreat, W.I.R & ensuite | Spectacular kitchen & Walk in pantry | Practical living areas seamlessly flowing to generous alfresco area.



ORACLE
PLATINUM HOMES

For more information contact **NATASHA WILSON** on **0416 422 209** or visit oracleplatinumhomes.com.au
QBCC 1174800 / NSW OFT 251160 / HIA Member No. 539981

Copyright Oracle Building Corporation Pty Ltd trading as "Oracle Platinum Homes". All plans and Facades are copyright and no part may be used, copied or reproduced in any form without permission from Oracle Platinum Homes. All measurements are to be used as a guide only and may differ from what is shown dependant on Façade. Photos may depict fixtures, finishes and features such as structural landscaping, timber decking, façade features, interior furnishings, customer cabinetry & window upgrades that do not form part of the Oracle Platinum Homes standard inclusions. Some photos included reflect display homes and not standard finishes, for a full list of inclusions visit www.oracleplatinumhomes.com.au or speak to a Sales Consultant. Oracle Platinum Homes reserves the right to alter pricing or inclusions at any time.
QBCC 1174800