

Thanks for visiting!



ON DISPLAY:
BELMONT 38 | DISPLAY FACADE
33 Rennington Street, Thornton, HomeWorld Thornton Estate

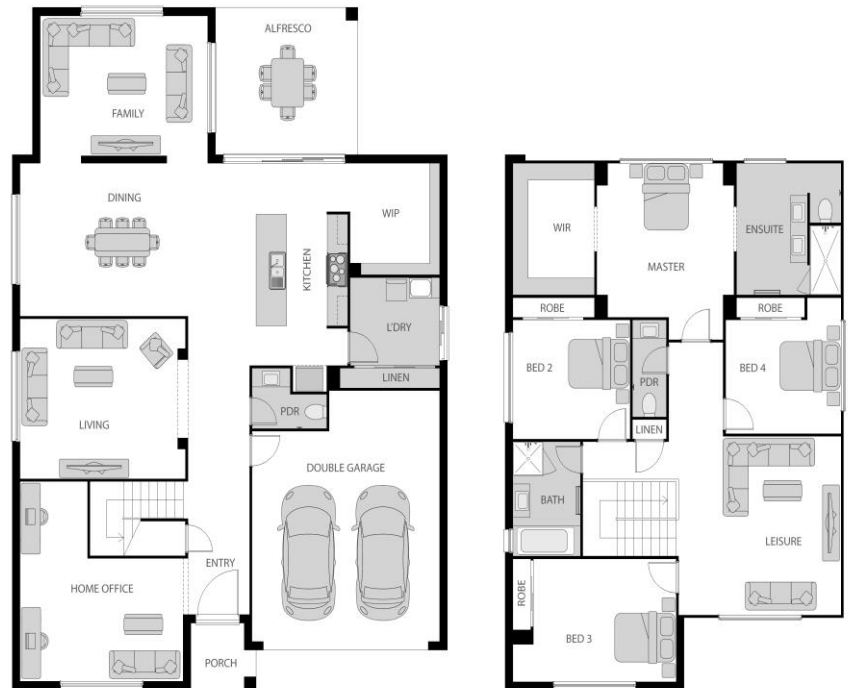
4 | 2.5 | 2

Home Size: 349.02m²

This beautiful highset design is perfect for narrow lots whilst not compromising on space, seamlessly blending open-spaces with modern and sophisticated style. Welcomed on arrival the Ultra style façade and feature entry door is sure to impress. This home quickly proves it's an oasis of tranquillity with multiple living spaces, spacious master and walk in robes to all bedrooms.

Key Features:

- Elegant Master, W.I.R & ensuite
- Kitchen island benchtop and walk in pantry
- Home office and private living area
- Private upstairs leisure room
- Large outdoor alfresco area



For more information contact **ROD TIPPER** on **0414 182 117** or visit oracleplatinumhomes.com.au

QBCC 1174800 / NSW OFT 251160 / HIA Member No. 539981

Copyright Oracle Building Corporation Pty Ltd trading as "Oracle Platinum Homes". All plans and Facades are copyright and no part may be used, copied or reproduced in any form without permission from Oracle Platinum Homes. All measurements are to be used as a guide only and may differ from what is shown dependant on Façade. Photos may depict fixtures, finishes and features such as structural landscaping, timber decking, façade features, interior furnishings, customer cabinetry & window upgrades that do not form part of the Oracle Platinum Homes standard inclusions. Some photos included reflect display homes and not standard finishes, for a full list of inclusions visit www.oracleplatinumhomes.com.au or speak to a Sales Consultant. Oracle Platinum Homes reserves the right to alter pricing or inclusions at any time. QBCC 1174800