

Thanks for visiting!

ORACLE  
PLATINUM HOMES



ON DISPLAY:  
**HAMPTON 29 | DISPLAY FACADE**

31 Rennington Street, Thornton, HomeWorld Thornton Estate

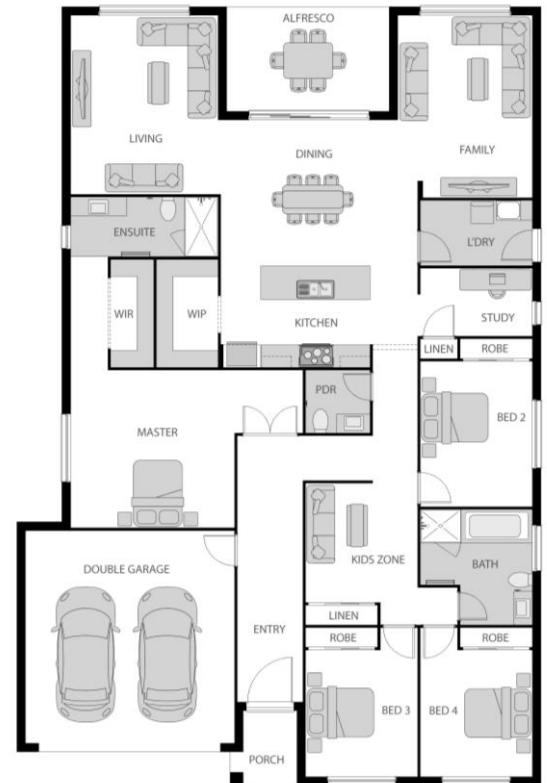
4 | 2.5 | 2

**Home Size: 270.96m<sup>2</sup>**

Enjoy a modern twist on this traditional family home, seamlessly blending the undeniable charm of grand open-spaces with comfortable modern practicality. Welcomed on arrival by the modern ultra style façade and feature entry door, this home quickly proves it's an oasis of tranquillity with generous living spaces, spacious Master suite and countless comfortable entertaining areas.

**Key Features:**

Kid's zone and media room | Spacious master, W.I.R & ensuite |  
Central kitchen & walk-in-pantry | Built in robes to all bedrooms | Study |  
Comfortable living areas opening onto central alfresco



ORACLE  
PLATINUM HOMES

For more information contact **ROD TIPPER** on **0414 182 117** or visit [oracleplatinumhomes.com.au](http://oracleplatinumhomes.com.au)

QBCC 1174800 / NSW OFT 251160 / HIA Member No. 539981

Copyright Oracle Building Corporation Pty Ltd trading as "Oracle Platinum Homes". All plans and Facades are copyright and no part may be used, copied or reproduced in any form without permission from Oracle Platinum Homes. All measurements are to be used as a guide only and may differ from what is shown dependant on Façade. Photos may depict fixtures, finishes and features such as structural landscaping, timber decking, façade features, interior furnishings, customer cabinetry & window upgrades that do not form part of the Oracle Platinum Homes standard inclusions. Some photos included reflect display homes and not standard finishes, for a full list of inclusions visit [www.oracleplatinumhomes.com.au](http://www.oracleplatinumhomes.com.au) or speak to a Sales Consultant. Oracle Platinum Homes reserves the right to alter pricing or inclusions at any time. QBCC 1174800